

PRODUCT OVERVIEW

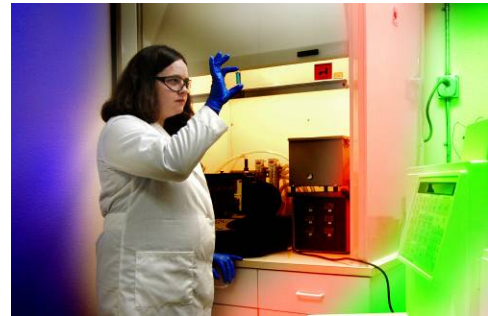
The LHC-110 is a liquid sample concentrator that reduces the volume of the sample by a factor of more than 20. By doing so, the user can reduce false alarm rates and improve the performance of their biodetectors such as PCR or bioassay for detection of various biological samples including salmonella, E-Coli, Anthrax spores, etc.

The LHC-110 can operate in a continuous mode as an inline concentrator as well as batch process for single sample manipulations. The device uses a proprietary membrane filtration approach that uses ultrasonic waves to minimize particle loss to the filtrate or the membrane itself (patent pending). The process is fully-automated and takes approximately 1 minute to complete for liquid samples such as water, alcohols, buffer solutions, etc.



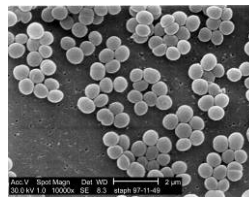
FEATURES

- ✿ Stand alone or inline operation
- ✿ Simplified liquid loading and unloading
- ✿ Microprocessor control for fully-automated, hands off, and repeatable operation
- ✿ User friendly
- ✿ Low cost
- ✿ Custom configurations available upon request



POTENTIAL APPLICATIONS

- ✿ Food and Agroproducts Safety
- ✿ Air Sampling and Biodetection for Homeland Security



- ✿ First Responders
- ✿ Pharmaceutical Applications
- ✿ Water Monitoring and Safety

TECHNICAL SPECIFICATIONS

| | |
|--------------------------|-------------------------------------|
| Dimensions | 9"W x 12"H x 6"D |
| Weight | 6 lb |
| Enclosure | Painted steel |
| Sampling rate | 20 ml/min or greater |
| Sample Volume | Up to 20 ml per sample |
| Concentrated Volume | <1-ml (100 µl under development) |
| Concentration Range | 0 to >10 ⁸ /ml |
| Process time | <1 min |
| Wait time | 0 |
| Nominal Particle Size | 0.1 µm to >10 µm |
| Concentration Efficiency | ~90% |
| Concentration Factor | >20 |
| Power Consumption | <100 W |
| Power Input | Standard wall outlet or 110 VAC |
| Operating environment | Room conditions |
| Display | Start to finish indicator color LED |
| Warm-up time | <1 minute |
| Input port for air | Standard compressed air inlet |

Many customized features and options are available upon request.